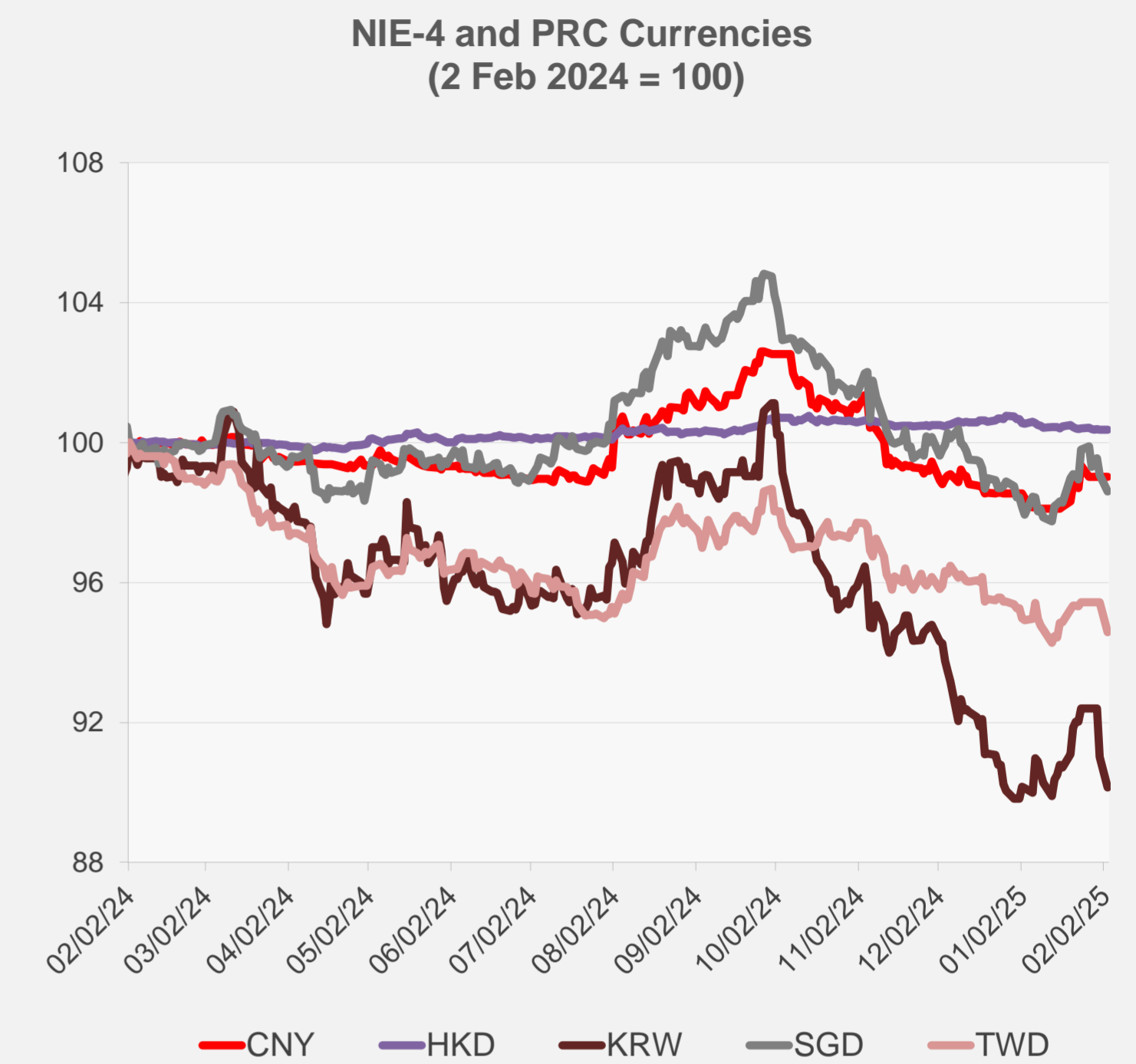
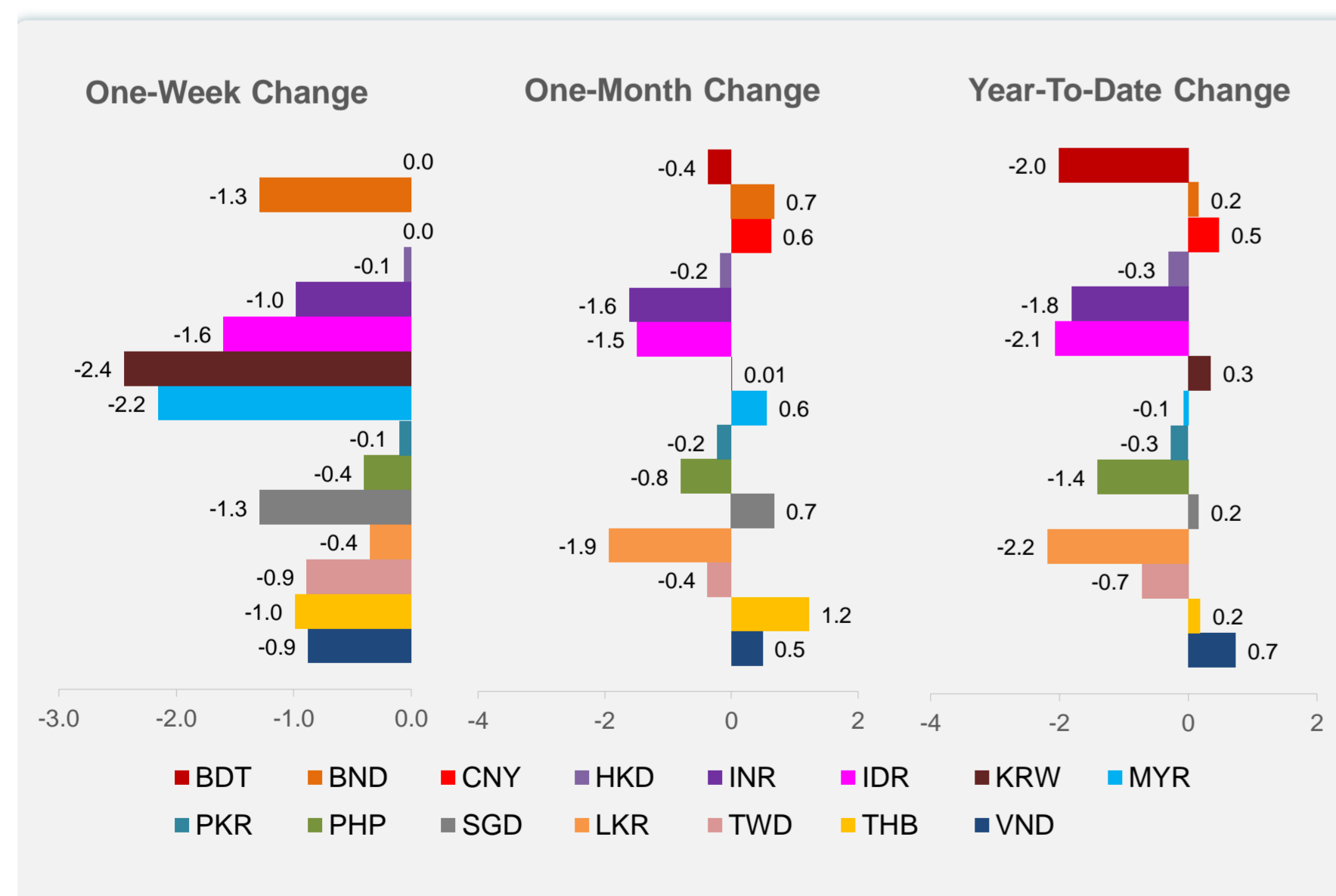
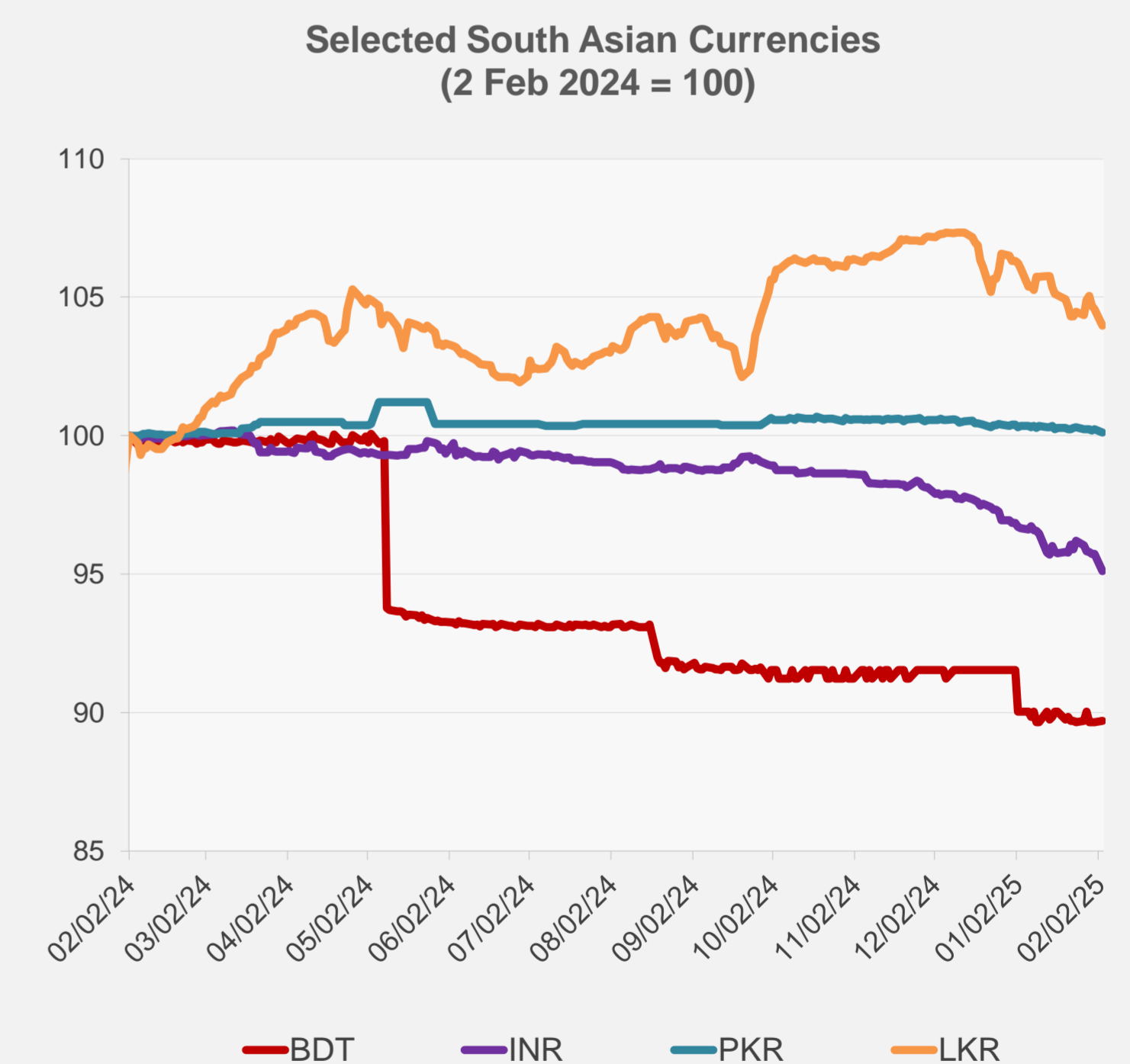
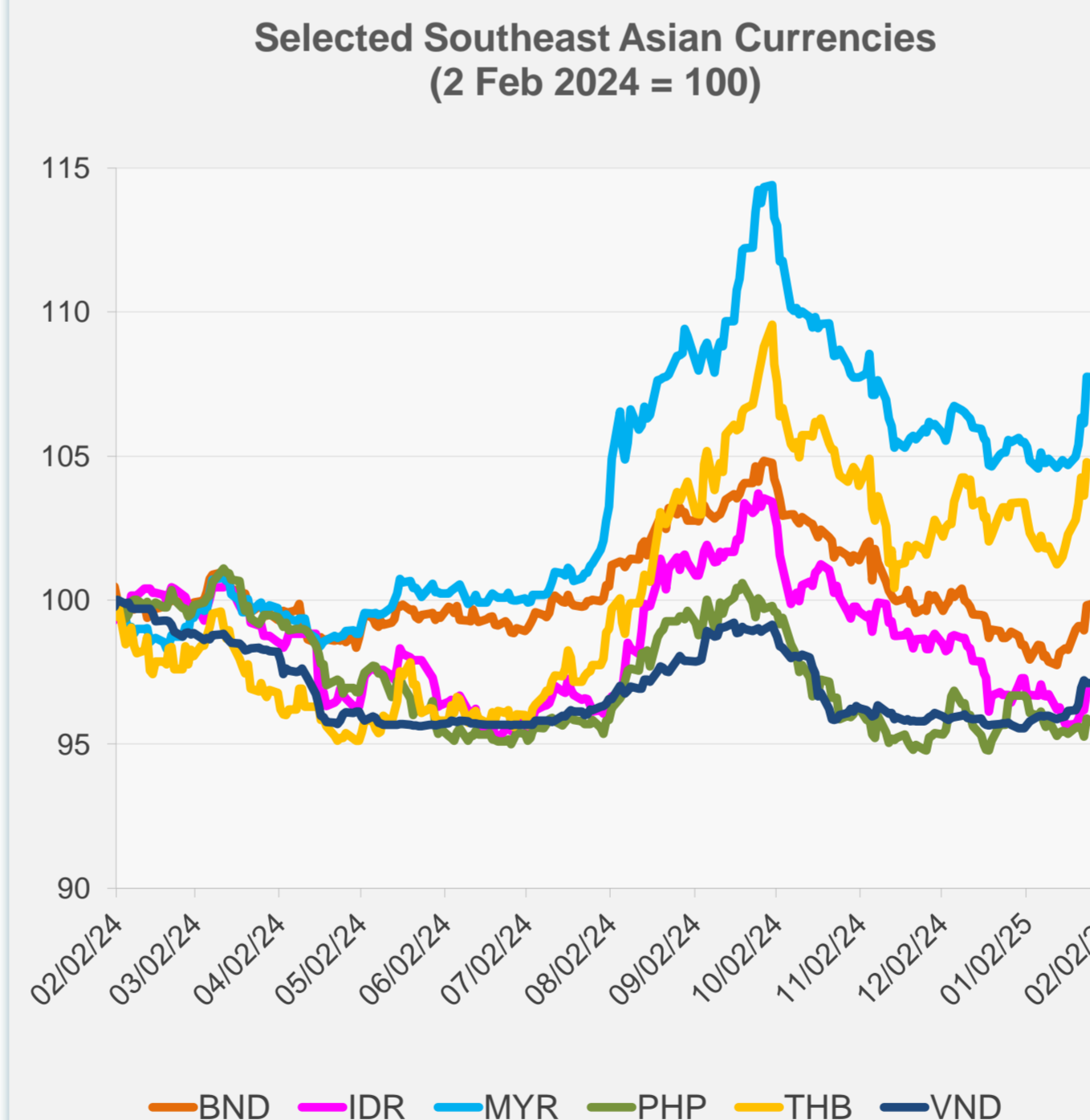


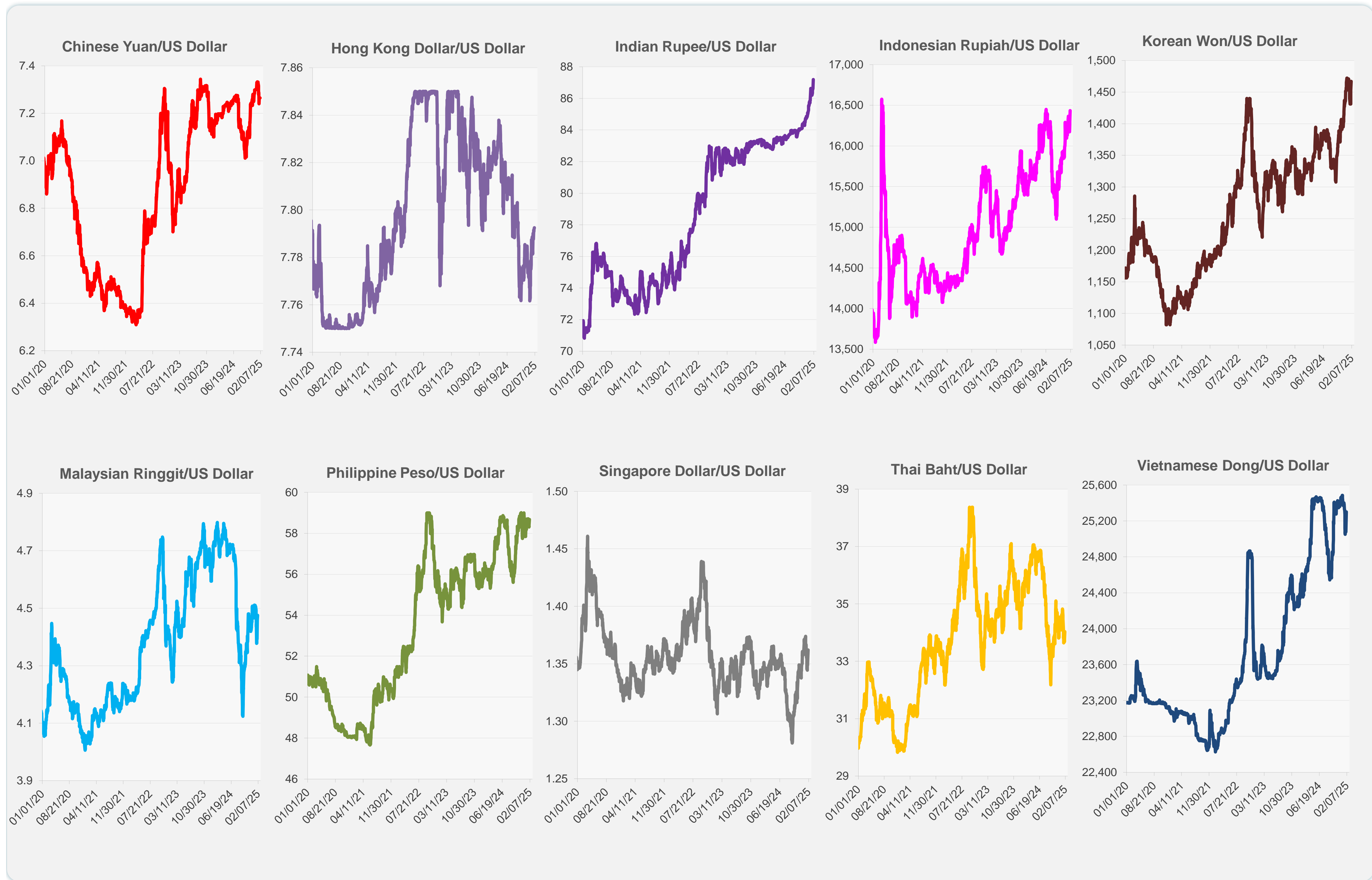
	Latest Closing	% change from Previous Day	% change from 01-Jan-25
Euro	0.97	-0.78	-0.39
Japanese yen (JPY)	154.79	0.04	1.53
Bangladeshi taka (BDT)	121.95	0.04	-2.01
Brunei dollar (BND)	1.36	-0.49	0.16
Chinese yuan (CNY)	7.26	0.00	0.48
Hong Kong dollar (HKD)	7.79	-0.01	-0.31
Indian rupee (INR)	87.19	-0.66	-1.81
Indonesian rupiah (IDR)	16,435.00	-0.82	-2.07
Korean won (KRW)	1,467.05	-0.96	0.35
Malaysian ringgit (MYR)	4.48	-0.39	-0.08
Pakistan rupee (PKR)	279.13	-0.12	-0.27
Philippine peso (PHP)	58.67	-0.51	-1.41
Singapore dollar (SGD)	1.36	-0.49	0.16
Sri Lanka rupee (LKR)	299.55	-0.56	-2.19
Taipei,China NT dollar (TWD)	33.02	-0.89	-0.72
Thai baht (THB)	34.03	-1.04	0.19
Vietnamese dong (VND)	25,300.00	-0.87	0.73



NIE = Newly Industrialized Economies



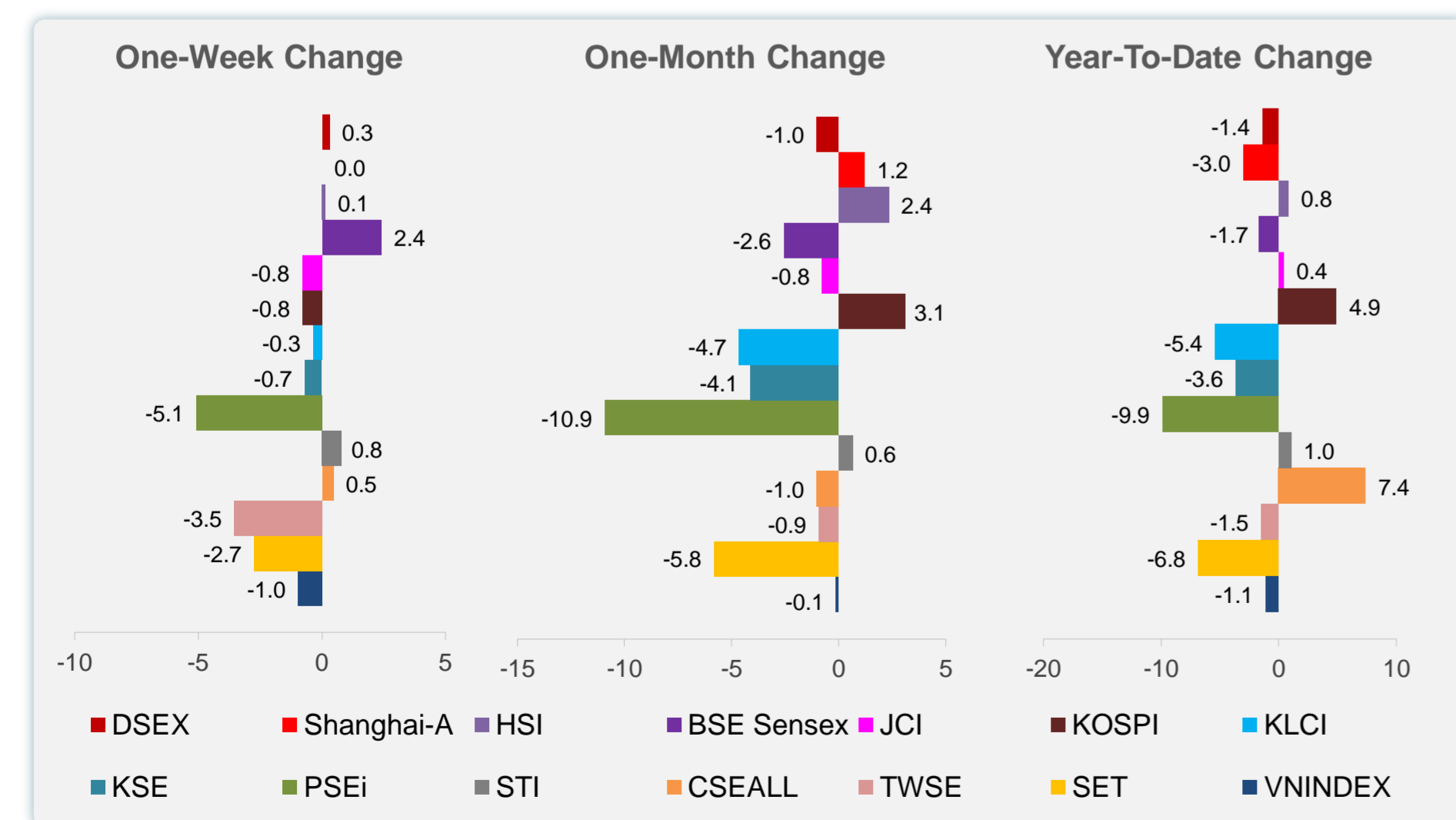
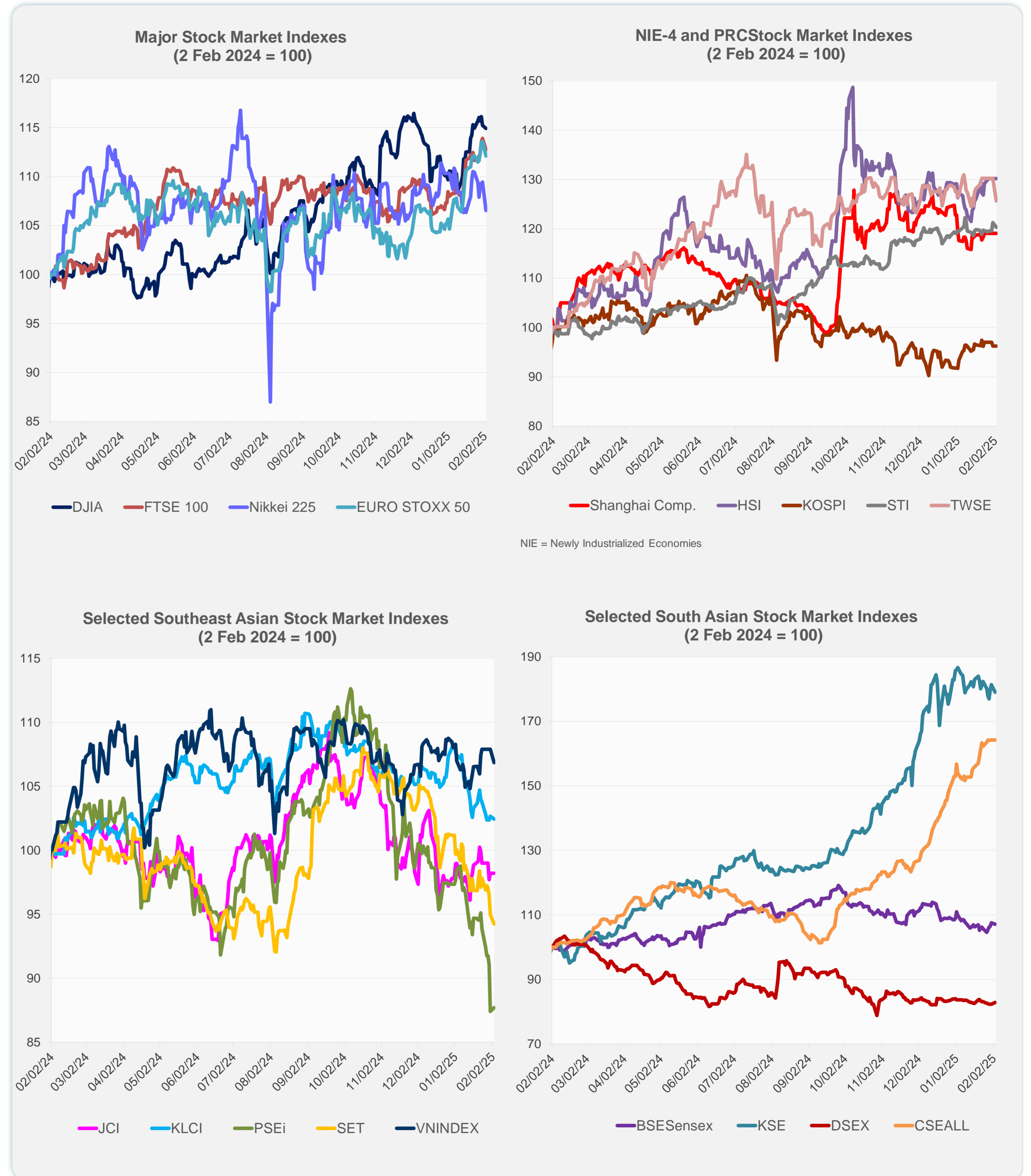
Note: Negative/Decreasing values indicate depreciation of local currency, and positive/increasing values indicate appreciation.
Source: ADB calculations using data from Haver Analytics.



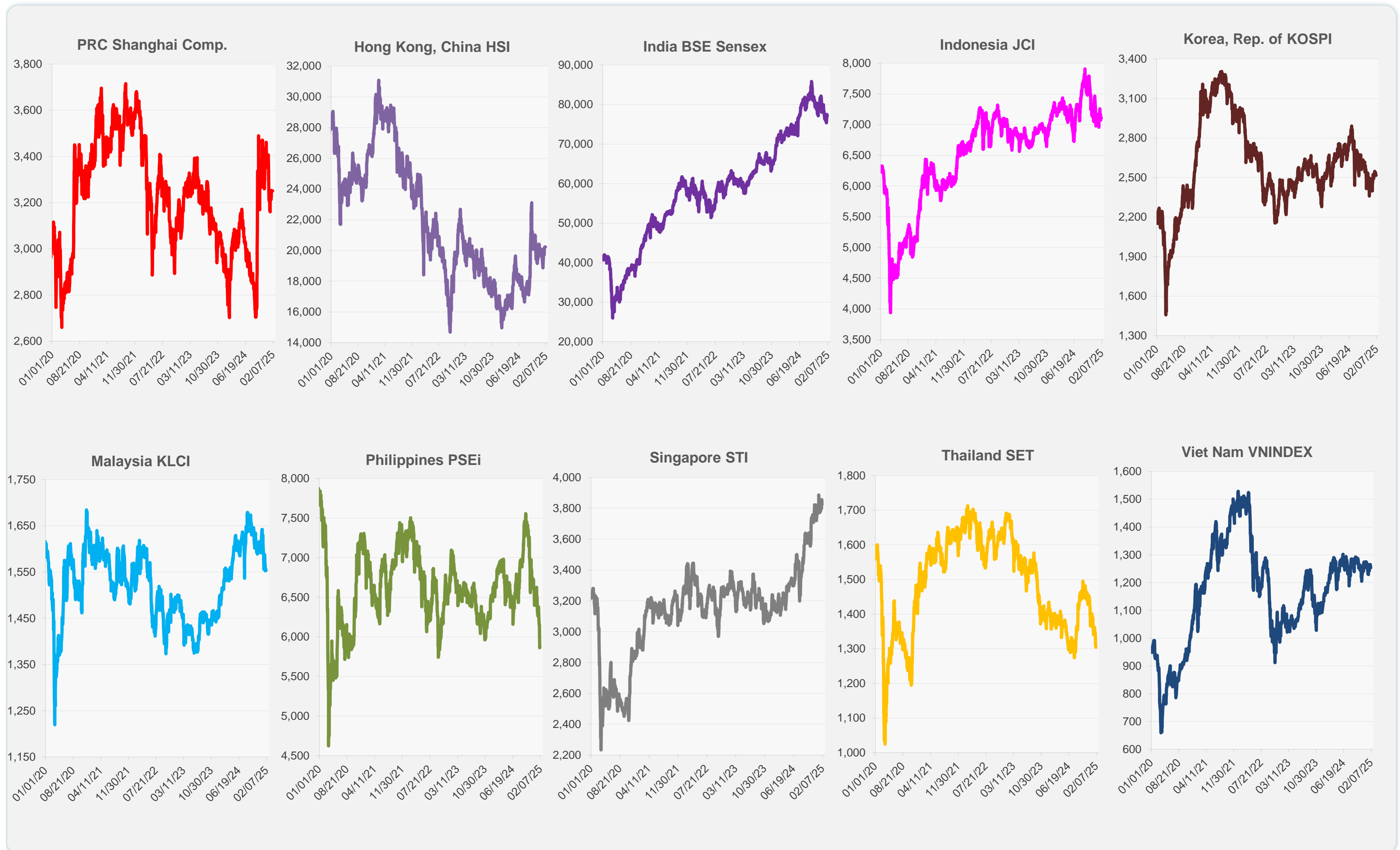
Source: Haver Analytics.

Daily Market Watch
STOCK INDEXES

	Latest Closing	% change from Previous Day	% change from 01-Jan-25
US Dow Jones Ind Avg	44,421.91	-0.28	4.41
US NASDAQ	19,391.96	-1.20	0.42
US S&P 500	5,994.57	-0.76	1.92
UK FTSE 100	8,583.56	-1.04	5.02
EURO STOXX 50	5,217.91	-1.30	6.58
Japan NIKKEI 225	38,520.09	-2.66	-3.45
Bangladesh DSEX	5,145.84	0.64	-1.39
PRC Shanghai Comp.	3,250.60	0.00	-3.02
Hong Kong, China HSI	20,225.11	0.00	0.82
India BSE Sensex	77,186.74	-0.40	-1.68
Indonesia JCI	7,109.20	0.00	0.41
Korea, Rep. of KOSPI	2,517.37	0.00	4.91
Malaysia KLCI	1,553.63	-0.21	-5.40
Pakistan KSE 100	112,745.01	-1.32	-3.64
Philippines PSEi	5,883.04	0.35	-9.89
Singapore STI	3,826.47	-0.76	1.03
Sri Lanka CSEALL	17,122.73	0.00	7.39
Taipei, China TWSE	22,694.71	-3.53	-1.48
Thailand SET	1,304.39	-0.77	-6.84
Viet Nam VNINDEX	1,253.03	-0.95	-1.09



Sources: ADB calculations using data from CEIC Data Company and Haver Analytics.



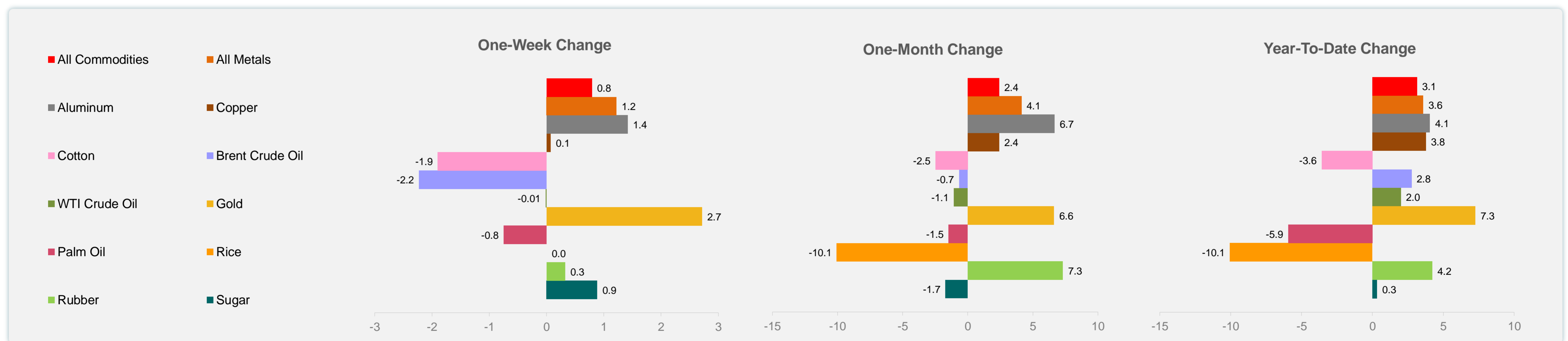
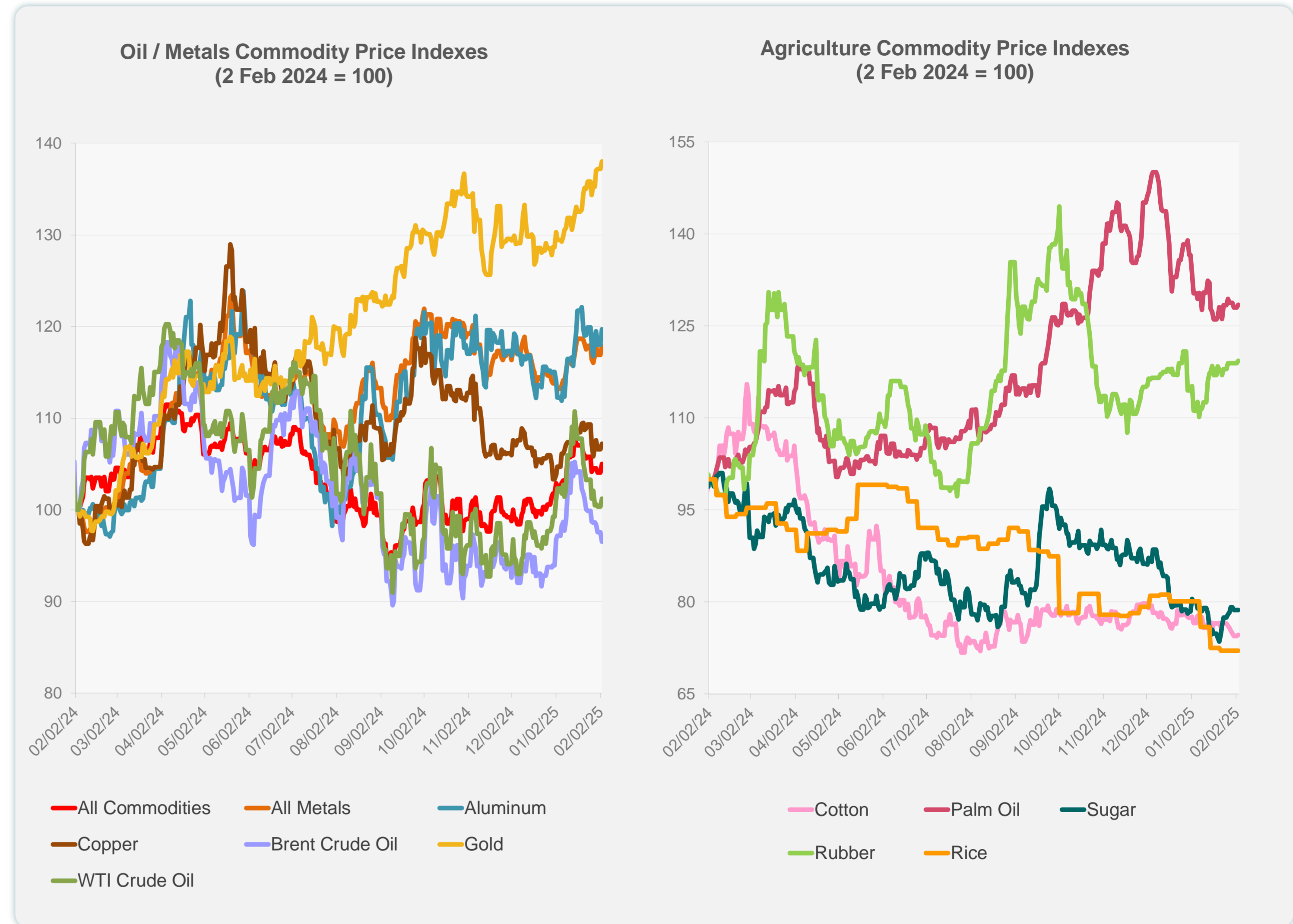
Sources: CEIC Data Company and Haver Analytics.

Daily Market Watch
COMMODITY PRICES

4 February 2025, 9:00 AM Manila

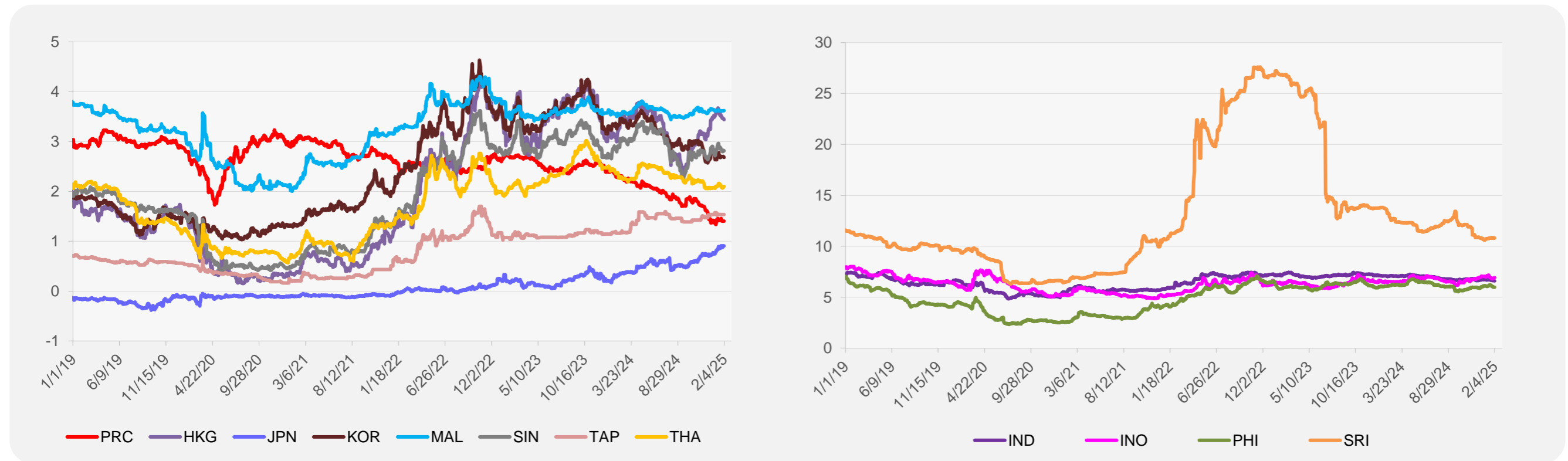
	Unit	Latest Closing	% change from Previous Day	% change from 01-Jan-25
S&P All Commodities	US\$	566.94	0.89	3.15
S&P All Metals	US\$	318.42	0.83	3.59
Aluminum	US\$/metric ton	2,629.33	1.43	4.06
Copper	US\$/metric ton	8,978.57	0.56	3.77
Cotton	US cents/lb	63.54	0.25	-3.58
Brent Crude Oil	US\$/barrel	76.15	-1.08	2.76
WTI Crude Oil	US\$/barrel	73.16	0.87	2.01
Gold	US\$/troy oz	2,815.21	0.60	7.27
Palm Oil	US\$/metric tonne	1,034.76	0.33	-5.94
Rice ¹	US\$/metric ton	483.00	0.00	-10.06
Rubber ²	US\$/kg	246.80	0.33	4.22
Sugar	US cents/lb	18.26	0.00	0.33

¹ Latest closing price from 22 January 2025.
² Singapore Exchange, Ribbed Smoked Sheet Rubber.

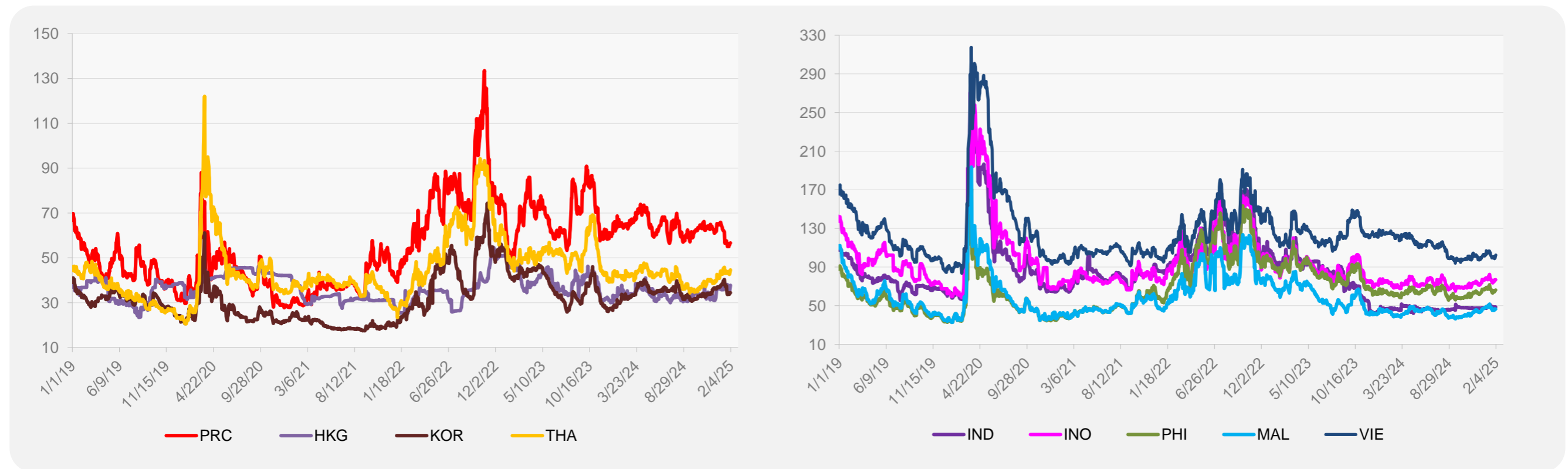


Source: ADB calculations using data from Bloomberg.

5-YEAR LOCAL CURRENCY GOVERNMENT BOND YIELDS (%)



5-YEAR CREDIT DEFAULT SWAP¹



¹ In USD and based on sovereign bonds.
Source: ADB calculations using data from Bloomberg.